

- ◆ Drawings and tracings shall be in **Black Ink.**
- ◆ A specimen shall be of a size not exceeding 20 x 20 x 20 centimetres.

METHODS OF PAYMENT

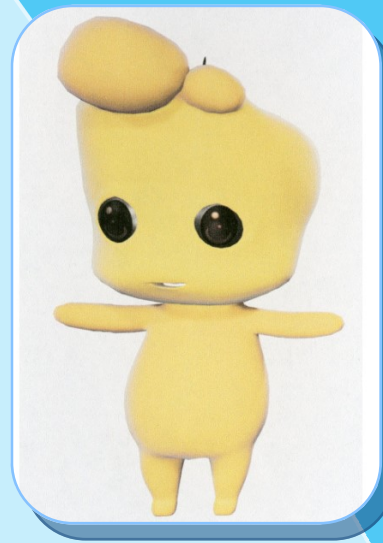
Cash payments are not accepted at the Intellectual Property Office. Applicants may choose to utilize one of the following methods of payment.

- * **Linx** (Debit Card Only)
- * **Bank Manager’s Cheque** made payable to **“The Controller, Intellectual Property Office”**

* **Cash at any District Revenue Office**

Please note that in order to make payment at the District Revenue Office, the Applicant must firstly obtain a voucher from the cashier at the Intellectual Property Office.

After payment at the Revenue Office, applicants are required to return to the Receiving Office with the receipt and the duplicate voucher collected at the Revenue Office together with the application form in order to file the said application.



TT/f/2017/00007



Some Basic Facts About Industrial Designs



TT/f/2013/00002



INDUSTRIAL DESIGNS

WHAT IS AN INDUSTRIAL DESIGN?

An Industrial Design is the ornamental aspect of a useful article. This ornamental aspect may be constituted by elements, which are three-dimensional (the shape of the article) or two-dimensional (lines, designs, patterns and colours) but must not be dictated solely or essentially by technical or functional considerations. It is the right to protect the ornamental, non-functional features of an Industrial Article or Product that arise from Design Activity.

To be eligible for Industrial Design Protection in this country, Industrial Designs must be **Original or Novel** and must be **Registered** at the Intellectual Property Office, Third Floor, Capital Plaza, 11-13 Frederick Street, Port of Spain.



WHAT KIND OF RIGHTS DOES INDUSTRIAL DESIGN INVOLVE?

Protection of an industrial design means that third parties not having the consent of the owner of the protected Industrial Design are not permitted to produce copies, or what is substantially a copy, of the protected design, when such acts are undertaken for commercial purposes.

An Industrial Design is registrable if it is new. The rights to registration of an Industrial Design belong to the Creator.

For example:
The shapes of many ergonomically designed pieces of furniture, tools, tool handles, boat hulls and sunglasses are just a smattering of the many shapes around us that are protected by Industrial Design.



HOW TO APPLY FOR INDUSTRIAL DESIGN RIGHTS IN TRINIDAD AND TOBAGO?

1. Applicants are advised to obtain a copy of the Industrial Designs Rules and Regulations available on the Intellectual Property Office's website www.ipo.gov.tt.
2. A specimen copy of the application is available at the Intellectual Property Office. This form should be copied on to **A4 size paper, single sided only**. The copied Form should be filled out in **duplicate** and **submitted with the following:**

- ◆ **Signed Power of Attorney** (if the application is being filed by the Applicant's Attorney/Agent).
- ◆ If the Industrial Design is **three dimensional**, **Four graphic representations** or **four drawings** or **tracings** of each of the different sides/views.
- ◆ Graphic representation, drawing or tracing of the industrial design **not exceeding 10 x 20 centimetres**.

Such representations, drawings or tracings shall be affixed on to four sheets of cardboard of A4 size.